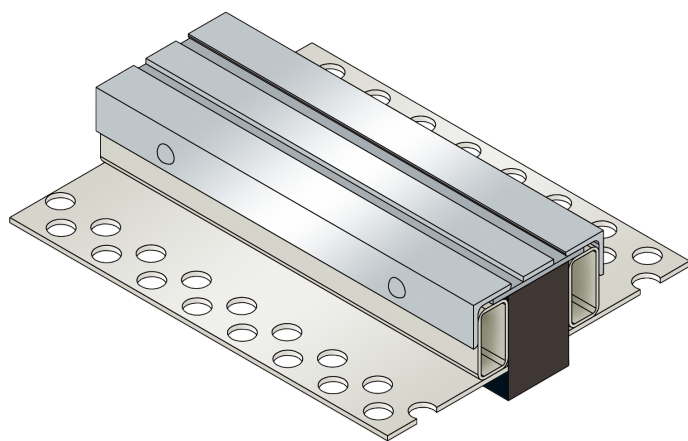




VA.6.85/..

- for heavy loads
- suitable for all types of covering
- visible surface in stainless steel



FEATURES

resistant to heavy loads, trafficable by fork-lift trucks, perforated bearing legs guarantee the best connection to the substrate/covering

APPLICATIONS

all industrial applications, shopping centres, railway stations, airports, exhibition halls

MATERIAL

substructure hot-dip galvanised steel and visible surface stainless steel V2A (V4A on request), K/VA foam material in the central section

COVERING TYPES

asphalt, coating, concrete, screed, industrial coverings, natural and stone slabs

TRAFFICABILITY

industrial trucks (lifting trucks, fork-lifts etc.), passenger cars, trucks

FORMED PARTS

corner piece, T-piece, cross piece

NOTES

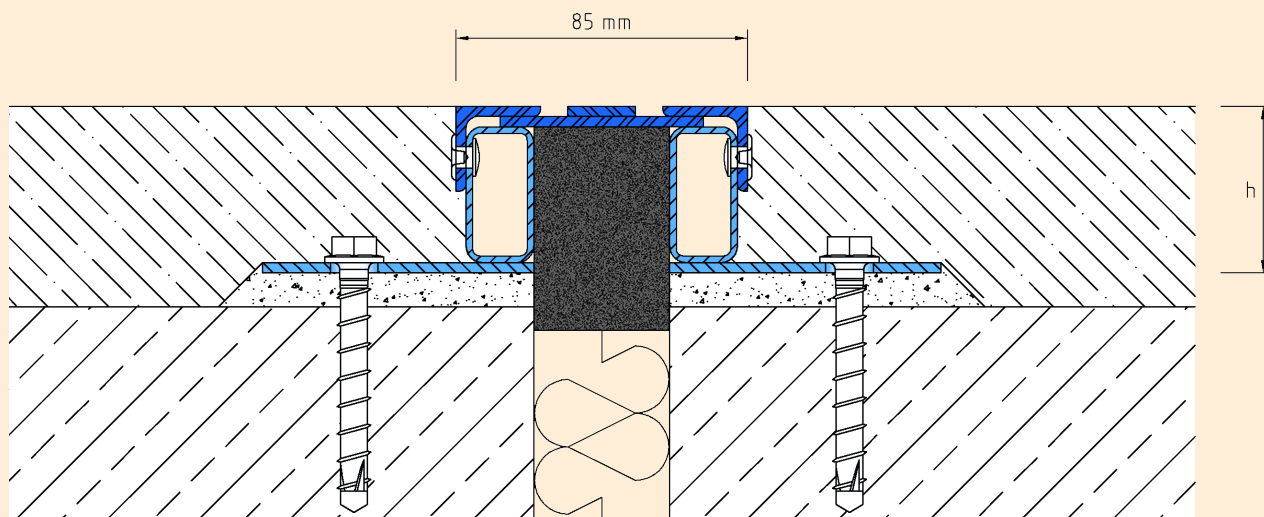
Depending on the floor covering, we recommend installing a grouting seal between the joint profile and the covering to prevent the hairline crack caused by the building physics. Installation by our own fitters recommended.

TECHNICAL DATA

Movement horizontal:	20 mm (± 10 mm)
Movement vertical:	2 mm (± 1 mm)
Visible width:	85 mm
Maximal joint width:	50 mm
Load rating:	wheel load 5000 kg up to \varnothing 150 mm, B = 100 mm
Load rating trucks:	600 kN (DIN 1072)
Load rating forklifts:	150 kN (DIN 1055-3)
Supply length:	3 mtr

DESIGNS

ARTICLE NO.	PROFILE HEIGHT (h)	RECESS (BxT)
VA.6.85/30	29 mm	250 x 39 mm
VA.6.85/40	39 mm	250 x 49 mm
VA.6.85/50	49 mm	250 x 59 mm
VA.6.85/70	69 mm	250 x 79 mm
VA.6.85/90	89 mm	250 x 99 mm
VA.6.85/110	109 mm	250 x 119 mm



VA.6.85

Subject to technical change without notice.