



ST.7.110/..

- for heavy loads
- vibration-free trafficability
- optimum edge protection
- continuous load transfer

FEATURES

resistant to heavy loads, trafficable by fork-lift trucks, lost formwork element for optimum joint edge protection of work-/compression joints in highly stressed industrial concrete floors, the profile structure prevents height displacement caused by certain loads.

APPLICATIONS

all industrial applications

MATERIAL

black steel, EVA foam material in the central space

COVERING TYPES

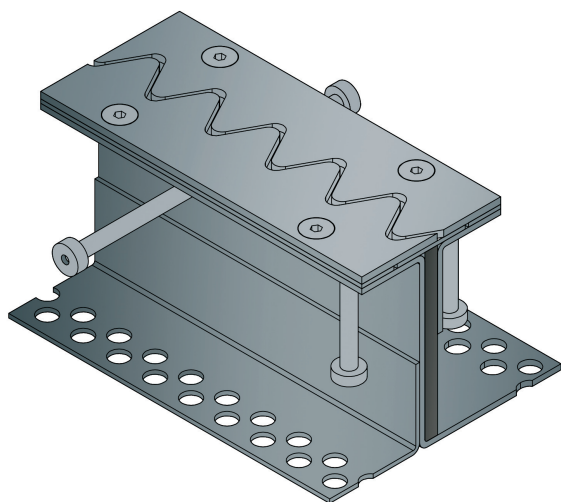
concrete, industrial covering

TRAFFICABILITY

industrial trucks (lifting trucks, fork-lifts etc.), passenger car, trucks

FORMED PARTS

corner piece, T piece, cross piece

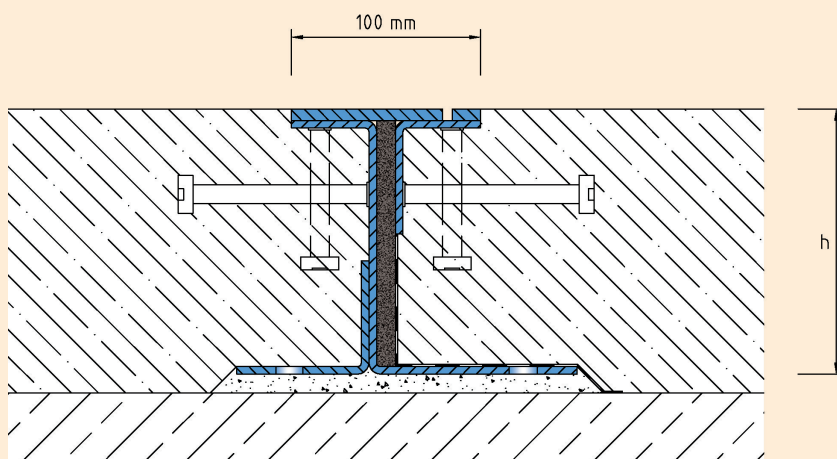


Technical data

Movement horizontal:	13 mm (-5/+8 mm)
Visible width:	108 mm
Load rating:	wheel load 5000 kg up to Ø 150 mm, B = 100 mm
Load rating trucks:	600 kN (DIN 1072)
Load rating forklifts:	150 kN (DIN 1055-3)
Supply length:	3 mtr

Designs

Article No.	Profile height (h)
ST.7.110/140	140 mm
ST.7.110/160	160 mm
ST.7.110/180	180 mm
ST.7.110/200	200 mm
Special heights on request.	



ST.7.110

Subject to technical change without notice.