



CM-Messpunkt

- flexible and unbreakable
- ultimate grip in the insulation
- prevents damage to the heating tubes
- CM-Messung according to DIN 4725

FEATURES

CM measuring point, the ideal and easiest way to set up a CM measuring point in the screed. The geometry and the very flexible material enable a secure hold in the insulation without tearing out or floating. It is usually installed between two heating pipes. This means that damage to the heating pipes during the CM measurement is almost impossible.

APPLICATIONS

residential, office and administration buildings

MATERIAL

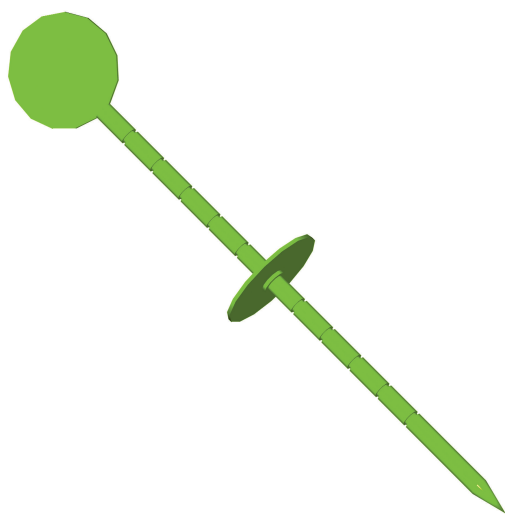
PE (polyethylen-synthetic material)

NOTES

packaging unit: 100 piece

color: bright green

We recommend one test point for each heater circuit.



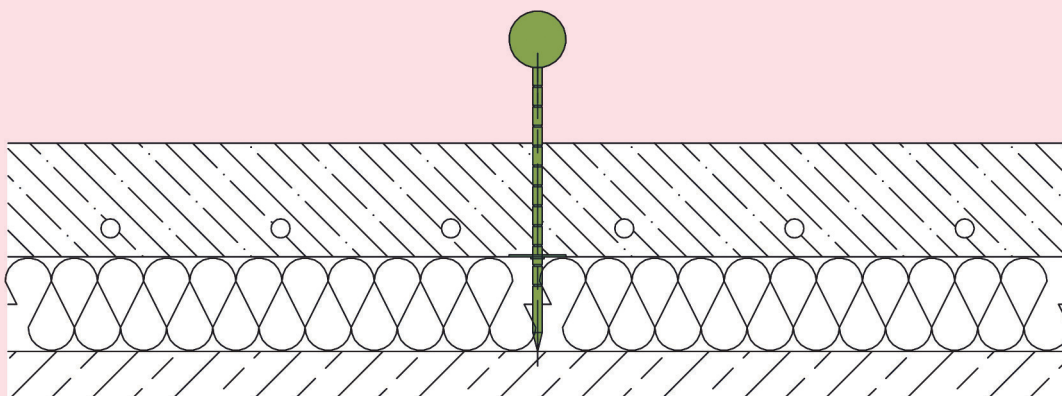
Technical data

Thickness: 5 mm
Length: 180 mm

Designs

Article No.

CM-Messpunkt



CM-Messpunkt

Subject to technical change without notice.