



AL.2.35/..

- replaceable flexible insert
- Non-PVC

FEATURES

expansion insert can be replaced anytime, abrasion, weather and temperature resistant (-40°C bis +120°C), punched bearing legs guarantee best connection to the subgrade/covering.

APPLICATIONS

residential, office and administration buildings

MATERIAL

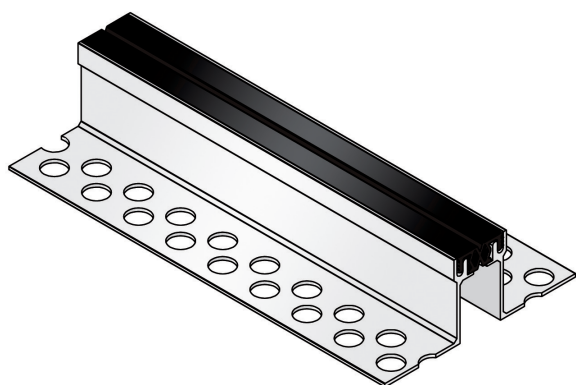
aluminium, synthetic rubber flexible insert (EPDM)

COVERING TYPES

screed, natural and stone slabs

FORMED PARTS

corner piece, T piece, cross piece

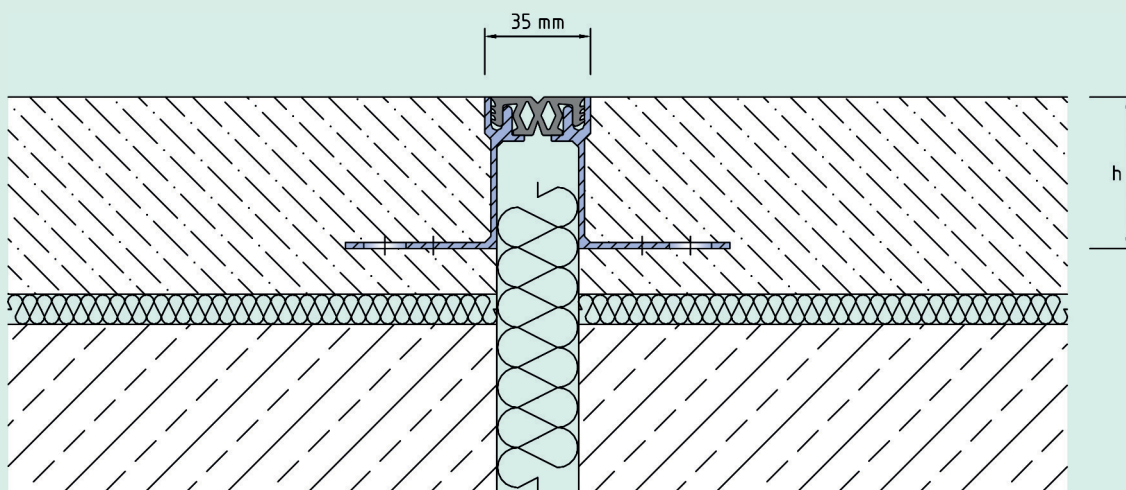


Technical data

| | |
|---------------------------|---|
| Movement horizontal: | 10 mm (± 5 mm) |
| Movement vertical: | 8 mm (± 4 mm) |
| Visible width: | 35 mm |
| Maximal joint width: | 30 mm |
| Load rating: | wheel load 500 kg up to \varnothing 150 mm, B = 100 mm |
| Supply length: | 3 mtr |
| Color of flexible insert: | black or grey |

Designs

| Article No. | Profile height (h) |
|-------------|--------------------|
| AL.2.35/20 | 20 mm |
| AL.2.35/35 | 35 mm |
| AL.2.35/50 | 50 mm |



AL.2.35

Subject to technical change without notice.