



AL.1.54/.. G

- replaceable flexible insert
- hygienic, smooth insert
- Non-PVC
- stable aluminium joists

FEATURES

expansion insert can be replaced anytime, abrasion, weather and temperature resistant (-40°C bis +120°C), punched bearing legs guarantee best connection to the subgrade/covering.

APPLICATIONS

residential, office and administration buildings, hospitals and clean rooms

MATERIAL

aluminium, synthetic rubber flexible insert (EPDM)

COVERING TYPES

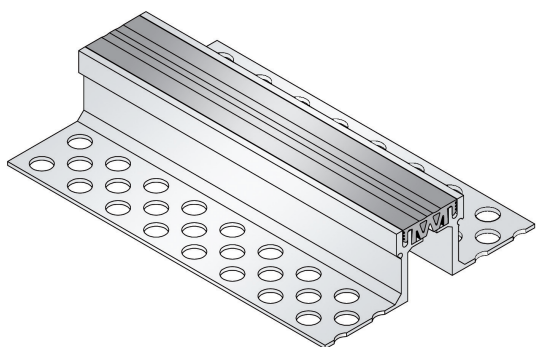
coating, screed, natural and stone slabs

FORMED PARTS

corner piece, T piece, cross piece, transition floor to wall

NOTES

In case of mastic asphalt, please request a technical consultation.

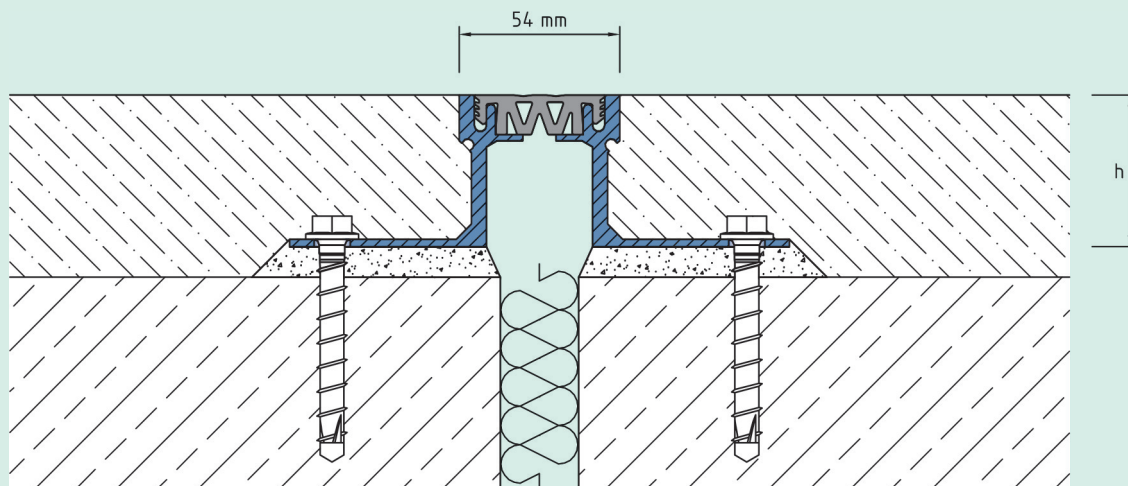


Technical data

Movement horizontal:	10 mm (±5 mm)
Movement vertical:	10 mm (±5 mm)
Visible width:	54 mm
Maximal joint width:	40 mm
Load rating:	wheel load 700 kg up to Ø 150 mm, B = 100 mm
Supply length:	3 mtr
Color of flexible insert:	grey

Designs

Article No.	Profile height (h)	Recess(WxD)
AL.1.54/20 G	20 mm	210 x 30 mm
AL.1.54/33 G	33 mm	210 x 43 mm
AL.1.54/50 G	50 mm	210 x 60 mm
AL.1.54/63 G	63 mm	210 x 73 mm
AL.1.54/83 G	83 mm	210 x 93 mm
AL.1.54/103 G	103 mm	210 x 113 mm
AL.1.54/123 G	123 mm	210 x 133 mm
Special heights on request.		



AL.1.54

Subject to technical change without notice.